

Research – Ethics – Knowledge

Learning Objectives

On completion of the course, participants will...

1. have an understanding of breast anatomy and physiology and appreciate the health implications of infant feeding decisions, both long and short term.
2. clarify their ethical position as health professionals in line with the IBCLC Code of Ethics and the International Code of Marketing and Breastmilk Substitutes
3. be able to access, critically analyse and apply the latest research evidence in the breastfeeding literature.
4. be aware of the principles of personal counselling and learn practical techniques to support mothers through the wide range of breastfeeding experiences.
5. be aware of and able to refer parents to community support groups for breastfeeding mothers.
6. develop networks with other health professionals who support breastfeeding in the community.

Faculty

Helen Adams RN RM IBCLC

Ros Escott BAppSc IBCLC Cert IV BEd(Couns)
Cert IV BEd(Comm)

Sue Littlechild RN RM IBCLC

Vicki McWilliam BAppSc MNutr & Diet GradCert
PaedNutr Accredited Practising Dietitian

Kate Mortensen GradDipCouns IBCLC

Dr Gillian Opie FRACP IBCLC

Susan Shaw RM IBCLC PICN

Evelyn Volders BSc, GradDip Diet, GradDip Health
Ed, GCHE, IBCLC, Adv APD

Others to be confirmed.

Australian Breastfeeding Association

www.breastfeeding.asn.au

Is a voluntary organisation established in 1964 (as the Nursing Mothers' Association) to encourage and support mothers who wish to breastfeed, whilst promoting in the community an awareness of the importance of human milk. At present the Australian Breastfeeding Association has around 16,500 members, over 1,100 trained volunteer breastfeeding counsellors, 300 community educators and 300 groups Australia wide.

Our Vision

✧ For breastfeeding and human milk to be the norm for human babies.

✧ For babies to breastfeed exclusively for six months with continuing breastfeeding for two years and beyond.

Our Mission As Australia's leading authority on breastfeeding:

✧ To educate society and support mothers, using up-to-date research findings and the practical experiences of many women.

✧ To influence society to acknowledge breastfeeding as normal, and important to skilled and loving parenting.

Lactation Resource Centre

www.lrc.asn.au

The Lactation Resource Centre (LRC) specialises in providing the community and health care industry with comprehensive and readily useable information and resources on all aspects of lactation.

The LRC was established in 1989 and since then has grown to become one of the most comprehensive collections of breastfeeding information in the world.

The Australian Breastfeeding Association is dedicated to providing excellence in breastfeeding education. All proceeds from this course go to support the Association's work in the community.



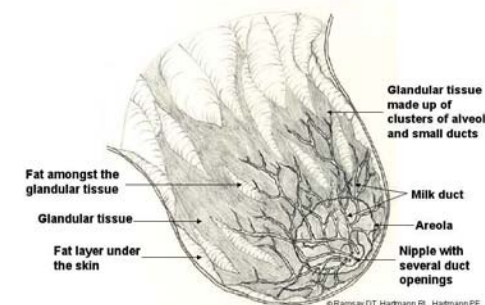
australian
breastfeeding
association

Lactation
Resource
Centre

Presents

Research – Ethics – Knowledge 2010

ANATOMY OF THE HUMAN BREAST



A course for IBCLC education and all those interested in learning about infant feeding.

Wednesdays 7pm – 9pm

**Part 2: Aug 25 – 15 Sept
(4 sessions) &**

Part 3: Oct 6 – 27 (4 sessions)

**Ashburton Uniting Church Hall
Ashburn Grove, Ashburton**

Melway 60 D10 (Melbourne metro)
Close to Ashburton Station, Alamein line
Easy access from Monash Freeway

Research – Ethics – Knowledge

PROGRAM

All sessions 7:00 pm – 9:00 pm Wednesdays

PART 2 (4 sessions)

1.	Health consequences of not breastfeeding <i>Ros Escott</i>	Aug 25
2.	Milk supply; feeding the older child; tandem feeding <i>Sue Littlechild</i>	Sept 1
3.	Solid foods for babies; why, what, when <i>Evelyn Volders</i>	Sept 8
4.	Infant allergies <i>Vicki McWilliam</i>	Sept 15

PART 3 (4 sessions)

1.	Viral transmission and breastmilk banking <i>Dr Gillian Opie</i> International code of marketing breastfeeding substitutes <i>Kate Mortensen</i>	Oct 6
2.	Baby friendly health initiative <i>Helen Adams</i> Counselling the breastfeeding mother <i>Kate Mortensen</i>	Oct 13
3.	LC in private practice/Feeding sick babies <i>Susan Shaw</i>	Oct 20
4.	Drugs and breastfeeding <i>Speaker tbc</i>	Oct 27

2 CERPS per session applied for.
Program may change slightly -
see website www.lrc.asn.au for update

COST

Includes package of references and reading material (All prices include GST)

Part 2 (4 sessions)	\$150 if paid by 18 Aug*
Part 3 (4 sessions)	\$150 if paid by 29 Sept*
Casual attendance	\$40 per session paid 7 days before**
Walk-in attendance	\$45 per session ***

Please note:

* Your registration will be confirmed.

** Registration for casual attendance must be received by the Wednesday one week prior to the session and will be confirmed, otherwise walk-in charge applies.

*** In case of walk-in attendance, pay at the door.

Reference & reading material will be mailed to you.

CANCELLATION & REFUND POLICY

For 4 sessions (within 48 hours): \$20 admin. fee

Transfer to another name: \$5 admin. fee

POST OR FAX REGISTRATION FORM TO

Lactation Resource Centre
PO Box 4000, Glen Iris Vic 3146
Fax: (03) 9885 0866

PARKING - Free car parking opposite the hall

CATERING - Coffee and tea will be provided.

ENQUIRIES

Telephone: (03) 9885 0855

Email: lrceducation@breastfeeding.asn.au

PRIVACY

Your privacy is important to us. The Lactation Resource Centre, as part of the Australian Breastfeeding Association, collects names, addresses and payment information for the purpose of providing Lactation Resource Centre services. Your personal details will not be given to any other party unless legally required to do so. Our privacy policy can be viewed at www.breastfeeding.asn.au or obtained by calling 03 9885 0855 during business hours. Your personal details may be used for fundraising purposes. Should you prefer not to receive these requests, please contact us.

Research – Ethics – Knowledge

Wednesdays 25 Aug – 27 Oct 2010

REGISTRATION / TAX INVOICE

once completed

All prices include GST

ABN 64 005 081 523

YOUR DETAILS

Name.....

Address

.....Postcode.....

Telephone (BH)

Email

Workplace Name

Please indicate? Sitting IBLCE exam first time

Resitting Recertifying

SESSION DETAILS (Select one)

Full course (Part 2): \$150 for 4 sessions

Full course (Part 3): \$150 for 4 sessions

Casual: sessions @ \$40 per session = \$.....

Circle sessions (Part 2) 1 2 3 4

(Part 3) 1 2 3 4

Walk-in: \$45 per session (<7 days or on night)

PAYMENT

Cheque or money order to Australian Breastfeeding Association

OR Visa MasterCard

____ / ____ / ____ / ____

Name on card

Expiry date/..... Amount authorised \$.....

Signature